

## Technical Data Sheet

## Leifeld C-Profile 1300

<b>Description:</b>	LEIFELD C-Profile Quick, easy fabrication and maximum rigidity. Use on it's own or combine it with the LEIFELD Strap. Pipe clamps and a large variety of fittings can be installed without the need for expensive special fasteners.
<b>Part.#:</b>	see table below
<b>Material Part.# 1300:</b>	DX51D+Z 275 MA, 3,0mm thick, sendzimier galvanized
<b>Minimum yield point:</b>	200 N/mm <sup>2</sup>
<b>Tensile strength:</b>	275 N/mm <sup>2</sup>
<b>Weight:</b>	1,5 kg/m
<b>Manufacturer:</b>	Leifeld
<b>Customs code:</b>	73089059
<b>Country of origin:</b>	DE
<b>REACH, ROHS, Building Products Regulations:</b>	Not applicable

Part.#	GTIN	Length (mm)	Pack Qty.	Weight (kg/Pce.)
1300	4250289300360	2.000	Bundle 100m, 800m	3,00
130015	4250289301237	1.500		2,25
130030	4250289305761	3.000		4,50



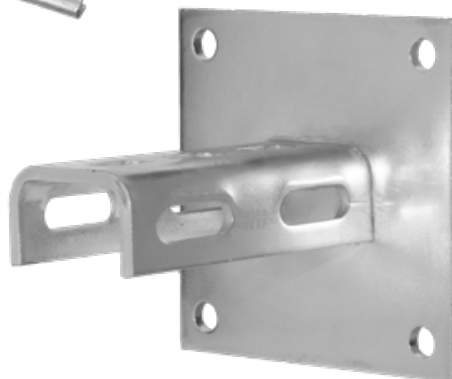
### Accessories



**Part.#: 1310**  
C-Profile Bracket  
H, horizontal



**Part.#: 1311**  
C-Profile Bracket  
V, vertical



**Part.#: 1315**  
C-Profile  
Wall Plate



**Part.#: 1320**  
C-Profile  
End Caps